

SAHAS NEPAL'S RESPONSE TO COVID-19 IN 2020



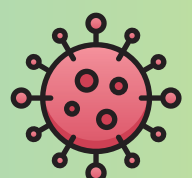
The Government of Nepal announced nationwide lockdown starting from 24 March to 21 July 2020 to prevent the COVID-19 that made the incredibly difficult situation for the unorganized sector's workers including daily wage-based laborers, poor farmers, small entrepreneurs and construction workers as they were deprived from their income sources. Schools and colleges were shut down, keeping a large population of students out of their study. For the immediate food security and the COVID-19 safety measures of those vulnerable groups, SAHAS Nepal distributed food packages, health and hygiene materials and medical equipment support to the communities, quarantine and isolation centers, hospitals and health posts.

In local level, SAHAS Nepal has been advocating to support the COVID-19 affected poor, dalit, marginalized, women, PwDs and adolescences communities through mobilizing the Community Based Organisations (CBOs) and Community Based Network Organisations (CBNOs). Also, to prevent gender-based violence and for

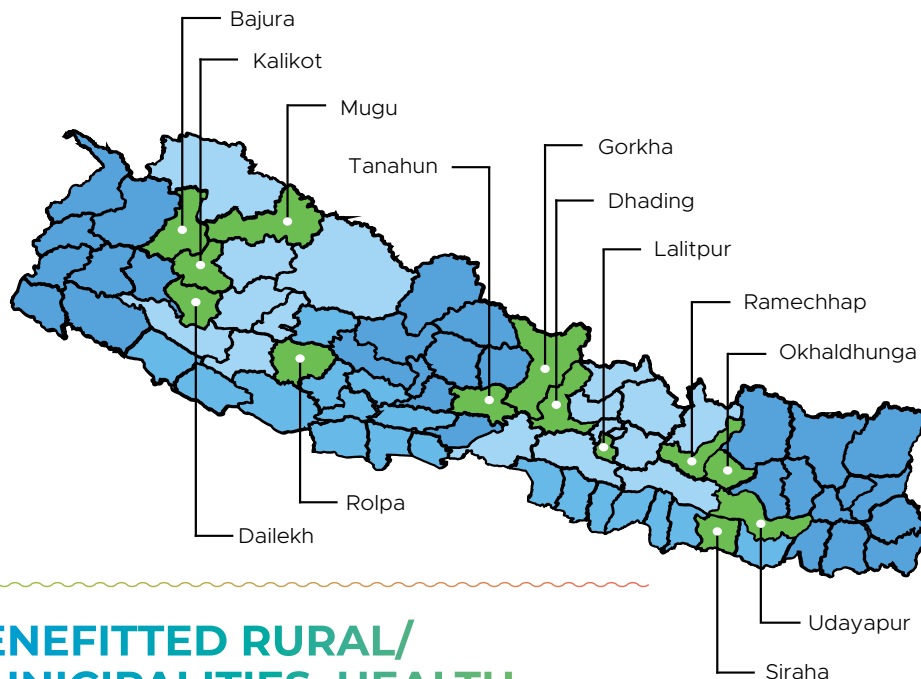
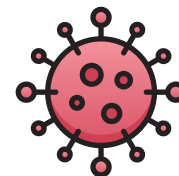
psychosocial support, awareness programs through radio, flex and poster prints, pamphlets, family discussions, and CBOs and CBNO's members have been organized. Also, Community Managed Coaching Centers (CMCC) with stationeries supported were provided to the students who were deprived of the online classes due to COVID-19.

For the implementation of the COVID-19 response, SAHAS Nepal closely worked with the Palikas, local health institutions, CBNOs and CBOs. The COVID-19 impact assessments were done through the field level staff and the necessary support were planned together with the CBOs and local government then the plans were submitted to the funding partners. After approval of the plan, the programs were implemented by a resources sharing basis with the palika and other like-minded agencies. Within the organization, to boost the COVID-19 action, an Emergency Committee for COVID-19 Response was formed to guide the overall program during the pandemic situation.

For the COVID-19 response, SAHAS Nepal generated NPR 16,752,738 from different funding partners. Also, the SAHAS Nepal staff contributed 10 to 20% of their salary to respond to the COVID-19 in its working areas.



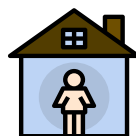
SAHAS NEPAL'S COVID-19 RESPONSE COVERAGE



BENEFITTED RURAL/ MUNICIPALITIES, HEALTH INSTITUTIONS, AND FAMILIES



**FOOD SECURITY
AND LIVELIHOOD**
6,697 HOUSEHOLDS



**ISOLATION AND
QUARANTINE SUPPORT**
924 BENEFICIARIES



HEALTH
36,072 BENEFICIARIES



WASH
66,276 BENEFICIARIES



**RISK COMMUNICATION
AND COMMUNITY
ENGAGEMENT**
**992,037 POPULATION
REACHED**



EDUCATION
3,587 STUDENTS



DIRECT CASH SUPPORT TO PALIKAS
NPR 372,000 | 198 HOUSEHOLDS

SUPPORTED BY:

**Brot
für die Welt**



SODI!



For more information



Group of Helping Hands (SAHAS) Nepal

P.O.Box 8975, EPC 1590, Lalitpur Nepal
Tel: 00977-1-5905670
Email: info@sahasnepal.org.np
Web: www.sahasnepal.org.np